

# **DirectoryFTP**

**(FTPS Client for  
Windows 2000, Windows  
2003, WindowsXP and Vista)**

**Blue Smoke Software**

This document is protected by Federal Copyright Law and may not be reproduced, transcribed, copied or duplicated by any means without the expressed written permission of:

**Blue Smoke Software**  
**13301 Southwest Highway**  
**Orland Park, IL 60462**  
**(708) 671-0100**

It is believed that the information contained in this manual is accurate, however no responsibility, financial or otherwise will be accepted for any consequence arising out of the use of this material.

## Table of Contents

Table of Contents .....	3
Introduction .....	4
Compatibility .....	4
Installation .....	5
Activation .....	5
Configuration.....	6
Add a new FTP directory.....	6
Remote Directory .....	7
Usercode .....	7
Password.....	7
Port .....	7
Host Name .....	7
Authentication Level .....	7
Proto .....	8
PASV.....	8
Client Certificate.....	8
Ignore Untrusted Root.....	8
Ignore Invalid Date.....	8
Ignore Invalid Signature .....	8
Local Directory.....	10
Log Directory .....	10
Keep Connection (idle) Open Time.....	10
Monitor Subdirectories.....	10
Auto Start at BOJ.....	10
File Disposition .....	10
Delete File .....	10
Move To .....	10
Manually Starting a File Watcher.....	11
Manually Stopping a File Watcher.....	11
Changing the VIEW .....	12
Messages.....	13
In Case of Difficulty.....	14
Program Fails to Start.....	14
Clients can not Connect.....	14
Clients Connect but then Disconnect.....	14

## Introduction

DirectoryFTP is small FTP client that simplifies the repetitive task of sending files to an FTP site. It can almost be thought of as a “Remote Share”. During the setup, the administrator defines a local directory to monitor and then makes an association of that directory to an FTP Site. When files are dropped into that directory, they are automatically sent to the corresponding FTP site and then removed/moved from the original directory. It’s that simple.

## Compatibility

DirectoryFTP has been tested with many popular FTP Servers including CuteFTP<sup>1</sup> and WS-FTPpro<sup>2</sup> as well as Blue Smoke Software’s miniFTPServer in both SECURED mode(SSL) and UNSECURED mode.

<sup>1</sup>CuteFTP is a product of GlobalSCAPE

<sup>2</sup>WS-FTP Pro is a product of IPSwitch Inc.

## Installation

Installation begins by executing the Setup.exe file. If you are installing this product on a VISTA machine, be sure to execute the Setup.exe and not just the .msi file. Vista requires the Setup file to handle UAC (User Account Control) properly.

The remaining Setup process is straight forward. The only option you are given is “Folder Selection” for Install Files.

The bulk of the configuration is done from the program itself.

## Activation

Before the program can be executed, it must be first activated with either a trial or Purchase license Key.

From the program files menu, Select Blue Smoke Software>directoryFTP>ActivationWizard.

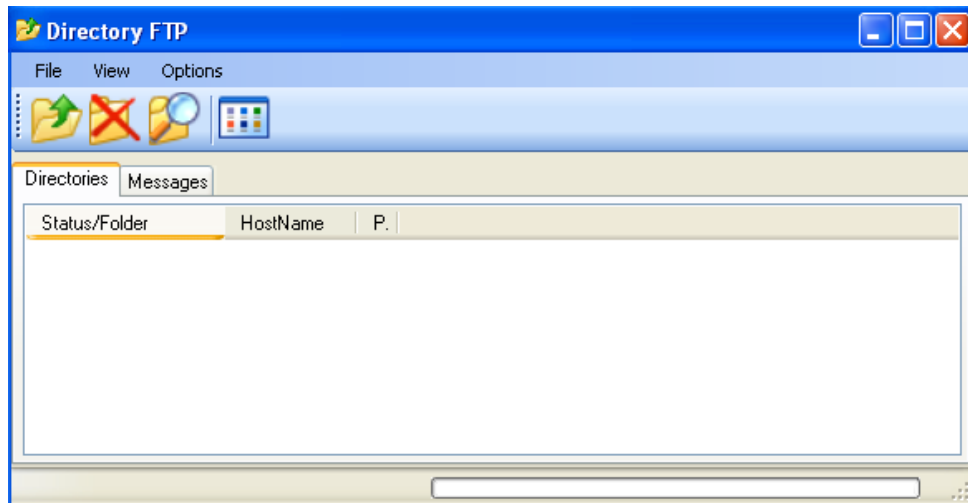
Follow the step by step prompts to either activate a trial or purchase.

If you purchased this product use your invoice number along with the purchase date from your receipt. when prompted.

NOTE: Make sure you are running this program on the machine you wish to Activate. If the machine that you wish to activate does not have internet access, the activation wizard will return a machine specific string you can email to [LICENSES@BLUESMOKESOFTWARE.COM](mailto:LICENSES@BLUESMOKESOFTWARE.COM) from another machine that does have access to the internet. Be sure to include your confirmation string if you are requesting a purchase key.

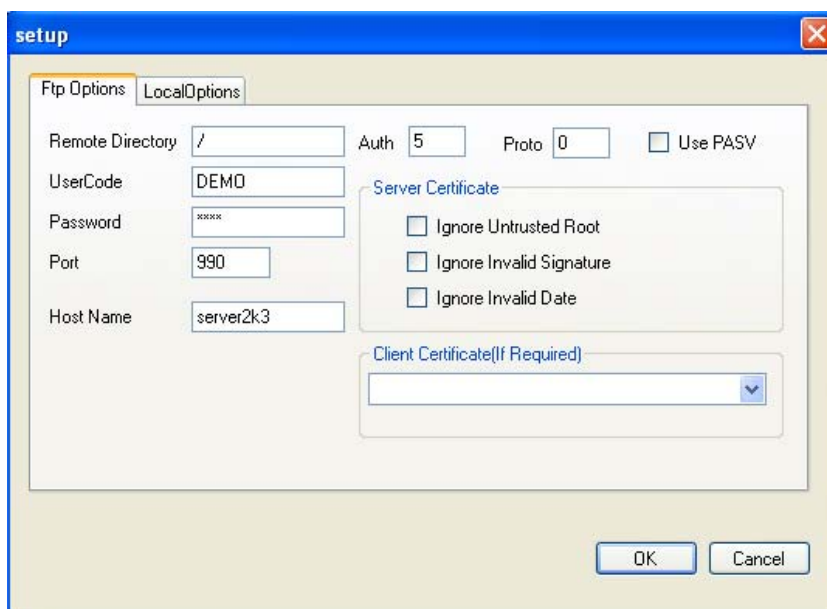
## Configuration

From the Program Files Menu, select Blue Smoke Software>directoryFTP>directoryFTP.



### Add a new FTP directory

Add a new ftp directory by clicking on the Folder with the Green Arrow or selecting File... New FTP Directory menu item. The dialog box below should appear.



From the FTP options TAB enter the FTP site options.

## Remote Directory

Enter the directory on the remote computer to CD to, before sending files.

## Usercode

This is the Usercode the client signs on with. (USER command)

## Password

This is the Password the Client signs on with (PASS command)

## Port

The FTP port number the remote computer is listening on. Defaults are 21 for unsecure ftp and 990 for FTPS.

## Host Name

The Domain name or IP Address of the remote site.

## Authentication Level

Constant	Description
None 0	No encryption is used.
SecureData 1	The data is encrypted with SSL.
ImplicitControl 2	The control connection is always encrypted with SSL.
ImplicitNormal 3	The maximum security setting.
ExplicitControl 4	The control connection is encrypted with SSL after an initial login.
ExplicitNormal 5	Everything is encrypted after the certificate is sent. This is used by many vendors including CuteFTP and WS_FTP pro.(This is the Default)

HashLogin 6	Encrypts and salts the password, using 256-bit AES to ensure stronger protection over a clear connection..
FirewallReady 7	Enables Secure FTP communications over a Firewall. This will only work in conjunction with PNC's FTP Monitor pairing.
ExplicitAutoControl 8	Explicit is used if possible; otherwise no encryption is used on the control connection.

### **Proto**

Set the Protocol to 0(Automatic)

### **PASV**

Check This option if local firewalls , prohibit connections.

### **Client Certificate**

If the remote site requires the client to authenticate, select a certificate form a list of available certificates currently available from the current user's store.

### **Ignore Untrusted Root**

If the server sends a certificate during the authentication process that can not be verified, Under normal circumstances, the authentication process would fail. By checking this option the authentication will continue as if the certificate was verified.

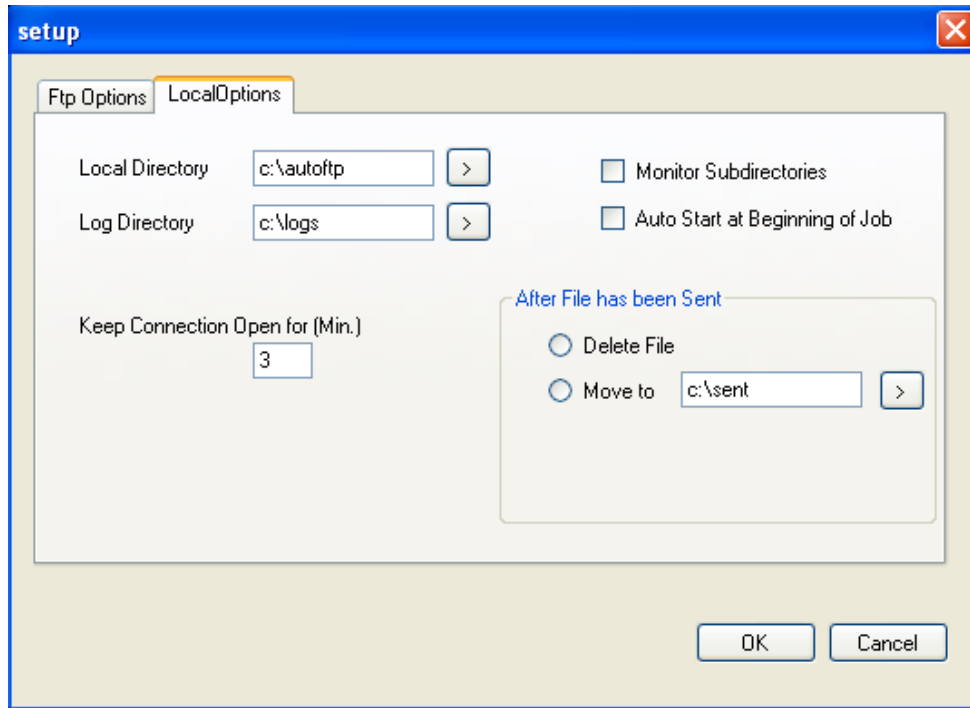
### **Ignore Invalid Date**

If the server sends a certificate during the authentication process that has a date that has expired, Under normal circumstances, the authentication process would fail. By checking this option the authentication will continue as if the date was correct.

### **Ignore Invalid Signature**

If the server sends a certificate during the authentication process that has a name that doesn't match the server/domain, Under normal circumstances, the authentication process would fail. By checking this option the authentication will continue as if name on the certificate matched the server name. (Useful if using a test certificates)

From the LocalOptions TAB enter the Local Directory options.



## **Local Directory**

The directory on this machine which to monitor.

## **Log Directory**

Specifies the directory to log messages to.

## **Keep Connection (idle) Open Time**

This specifies the amount of time the connection should stay open when there are no file transfers Occurring.

## **Monitor Subdirectories**

Monitor the specified directory along with all of its subdirectories

## **Auto Start at BOJ**

Start monitoring this directory as soon as the program is executed.

## **File Disposition**

After the file has been sent, the original file can be either removed or moved to another directory

### **Delete File**

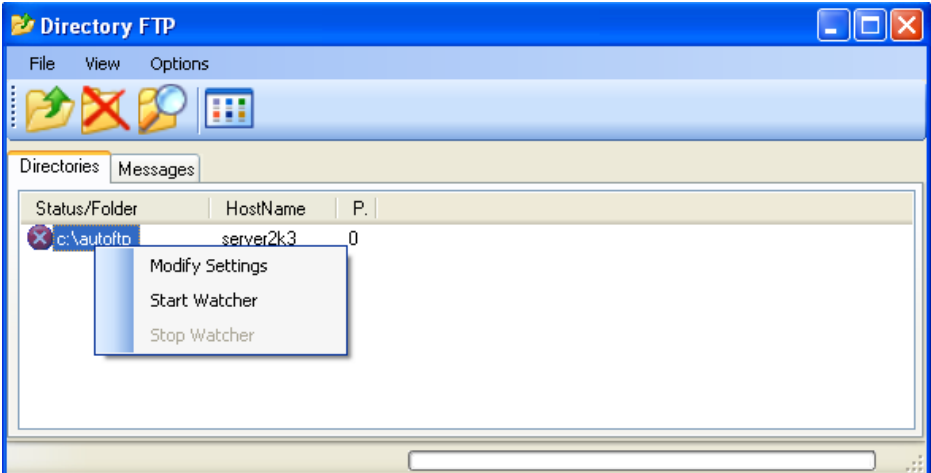
Delete the file after successful send.

### **Move To**

Move the file To the selected directory after a successful send.

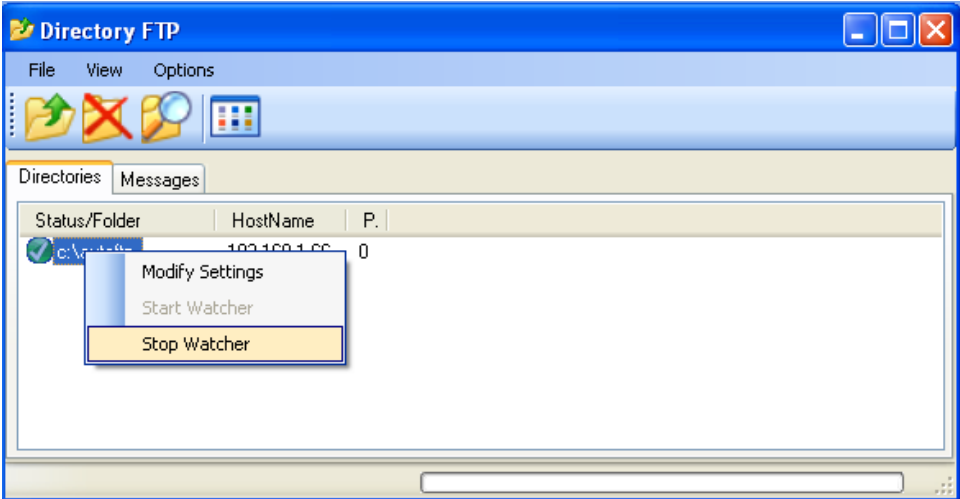
## Manually Starting a File Watcher

If the Icon is displayed as a RED X, The file watcher is idle. To manually start the watcher, select the directory by right clicking the item and choose start from the menu as shown below.



## Manually Stopping a File Watcher

If the Icon is displayed as a GREEN ARROW, The file watcher is Active. To manually stop the watcher, select the directory by right clicking the item and choose stop from the menu as shown below.

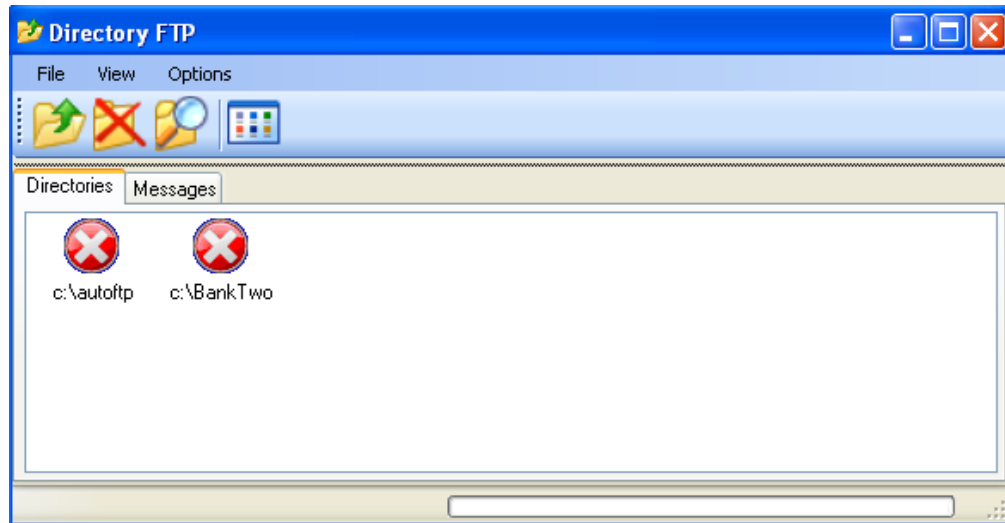


## Changing the VIEW

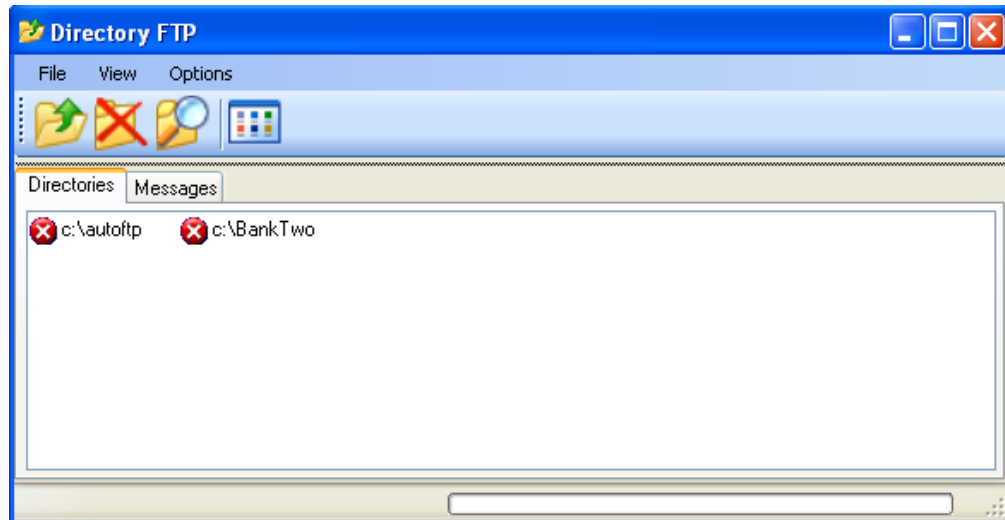
The user can select 3 different views of the defined ftp directories. Select from the choices under The View menu item.

The Normal list view as shown above.

Large Icons as shown below

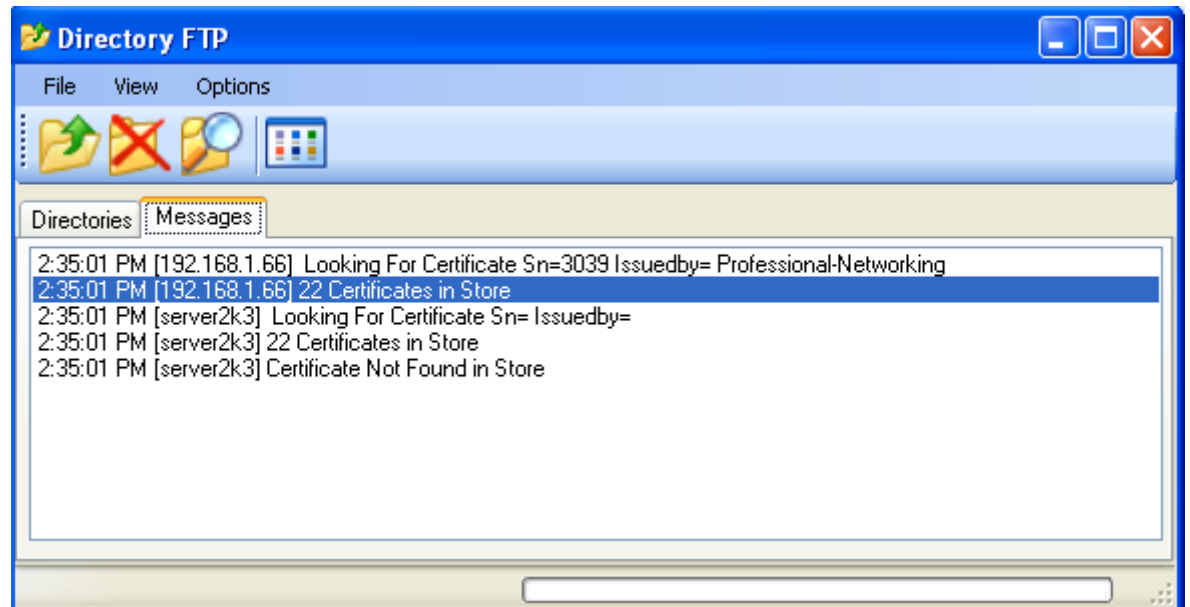


Or Small Icons as shown below



## Messages

To view system messages, select the Messages Tab. Messages are time stamped tagged with the Remote Host Name.



## **In Case of Difficulty**

### **Program Fails to Start**

If the program fails to start, the license key is not present or expired.

### **Clients can not Connect**

If the service starts but clients fail to connect, make sure the firewall is allowing incoming connects on the port number specified in the configuration. By default Windows Vista and Server 2003 along with many other firewalls either Software or Hardware firewalls disable most ports.

### **Clients Connect but then Disconnect**

If the Client connects but then disconnects, Usually this is caused by a mismatch of authentication levels between the Client and Server. These must match.

Also verify the client is using the correct usercode and password.