

IT'S CRYPTIC



SOFTWARE DISCLAIMER

Blue Smoke Software is provided "as is" without warranty of any kind, either express or implied, including, but not limited to, the implied warranties of fitness for a purpose, or the warranty of non-infringement. Without limiting the foregoing, Blue Smoke Software makes no warranty that:

- ❑ software will meet your requirements.
- ❑ software will be uninterrupted, timely, secure or error-free.
- ❑ results obtained from the use of the software will be effective, accurate or reliable.

Downloaded software and its documentation made available from Blue Smoke Software:

- ❑ could include technical or other mistakes, inaccuracies or typographical errors. Blue Smoke Software may make changes to the software or documentation.
- ❑ may be out of date, and Blue Smoke Software makes every effort to update such materials.

Blue Smoke Software assumes no responsibility for errors or omissions in the software or documentation.

In no event shall Blue Smoke Software be liable to you or any third parties for any special, punitive, incidental, indirect or consequential damages of any kind, or any damages whatsoever, including, without limitation, those resulting from loss of use, data or profits, whether or not Blue Smoke Software has been advised of the possibility of such damages, and on any theory of liability, arising out of or in connection with the use of this software.

The use of the software from Blue Smoke Software is done at your own discretion and risk and with agreement that you will be solely responsible for any damage to your computer system or loss of data that results from such activities. No advice or information, whether oral or written, obtained by you from Blue Smoke Software shall create any warranty for the software.



Table of Contents

1. It's Cryptic - Overview	4
1.1. Features	4
1.2. It's Cryptic Requirements	4
1.3. It's Cryptic Optional Services.....	5
2. Getting Started	5
2.1. Installing It's Cryptic	5
2.2. Configuring It's Cryptic.....	5
3. Running It's Cryptic	10
3.1. Manual Mode	10
3.2. Automatic Mode	11
4. It's Cryptic Screens	12
4.1. Message Screen.....	12
4.2. Cryptic Thread Status Screen.....	13
5. It's Cryptic and It's Cryptic Quick Decrypt Command-line execution.....	13



1. IT'S CRYPTIC - OVERVIEW

It's Cryptic is an application that encrypts data you need usable only by you. **It's Cryptic** encrypts files you specify by extensions and folders. **It's Cryptic** uses a secret word or phrase you enter. It is not saved anywhere on your computer. By not saving this secret word or phrase there is no way anyone can find it, or know what it is, unless you tell them what it is. If your computer is stolen, your data will still be safe, even from a very good hacker.

You can send your encrypted data to others and include the **It's Cryptic Quick Decrypt** program. You can encrypt your data with different secret keys, so no two recipients of encrypted data has the same secret key, and distribute the encrypted data, usable only to others with **It's Cryptic**, or **It's Cryptic Quick Decrypt** program.

1.1. FEATURES

- ❑ Triple-DES encryption
- ❑ Automatic encryption mode
- ❑ Manual encryption decryption
- ❑ Scrub and delete original file
- ❑ Encrypt encrypted files multiple times
- ❑ **Free to distribute** decrypt program for users you send encrypted data

1.2. IT'S CRYPTIC REQUIREMENTS

It's Cryptic and It's Cryptic Quick Decrypt runs on Windows XP / 2000 / 2003 / Vista with .NET framework 2.0

The better the hardware you have the faster **It's Cryptic** will run.



1.3. IT'S CRYPTIC OPTIONAL SERVICES

Blue Smoke Software can provide the following optional services:

- ❑ **It's Cryptic** can be optionally compiled for a unique internal version code so other versions of **It's Cryptic** cannot be used to decrypt your data. This provides an additional level of security.
- ❑ Blue Smoke Software is custom software developer and is open for custom enhancements to meet your needs.

2. GETTING STARTED

2.1. INSTALLING IT'S CRYPTIC

Install **It's Cryptic** by running the Its_Cryptic_Setup.exe program, or running the Its_Cryptic.msi program. A program group and a desktop icon will be created for the **It's Cryptic** and **It's Cryptic Quick Decrypt** application.

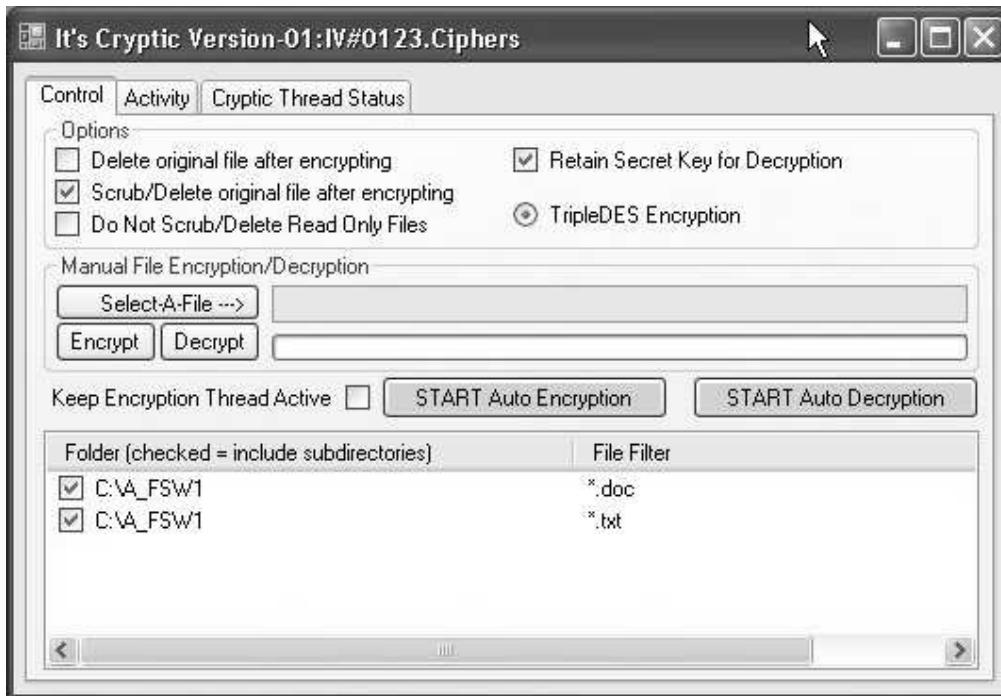
2.2 CONFIGURING IT'S CRYPTIC



The previous screen shown is displayed when **It's Cryptic** is run. From here you enter the secret key you will use to encrypt all your data. This secret key is not saved anywhere for added protection.



It's Cryptic



This is the main screen for **It's Cryptic**. From this screen you configure, control, monitor, and operate the **It's Cryptic** application. Other screens are the Activity Screen and Cryptic Thread Status. The 'Activity' tab screen is a message screen. The 'Cryptic Thread Status' tab screen shows the progress of files currently being encrypted, scrubbed, or decrypted

Options

Delete original file after encrypting – deletes the original file after successfully encrypting it.

Scrub/Delete original file after encrypting – not only deletes the original file after successfully encrypting it, but also scrubs the original data before deleting it. This step takes extra time but adds another security layer of preventing recovering deleted data.

Do Not Scrub/Delete Read Only Files – if the original file was marked with the Read Only file attribute it will not scrub or delete the file.

Retain Secret Key for decryption – once you enter the decryption key it will be remembered for the entire time **It's Cryptic** is running.

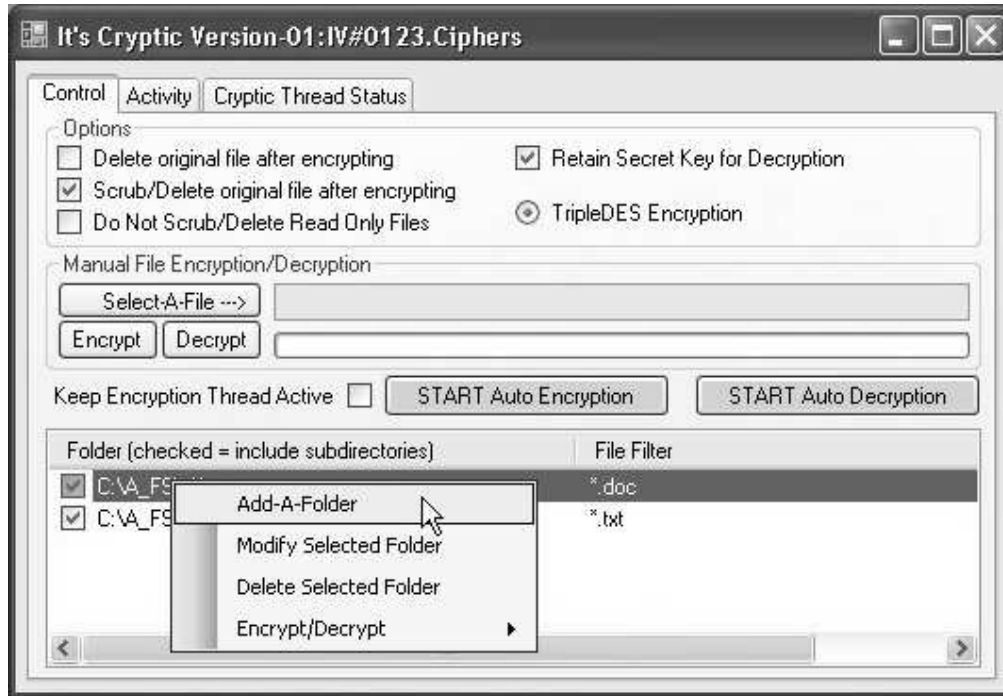
TripleDES Encryption – only choice for this version

Execution Options

Keep Encryption Thread Active – when the 'START Auto Encryption' button is pushed the Encryption Thread will stay running, and watch for new files to encrypt. When the 'STOP Auto Encryption' button is pushed the thread will terminate, when it is idle.

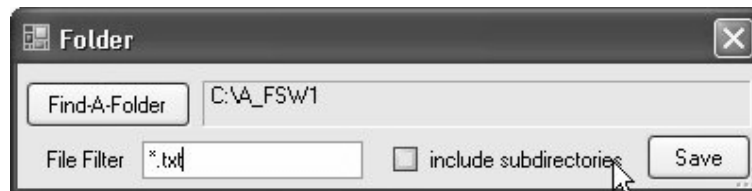


Add/Modify/Delete A Folder



Right-Click anywhere on the bottom area of the screen and a menu of choices will appear. They are as follows:

Add-A-Folder - add a new folder and or File Filter.



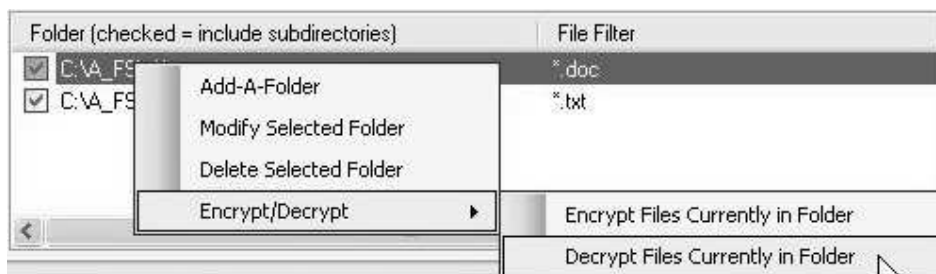
Find-A-folder – displays a dialog window for you to select a folder **It's Cryptic** will look into files to encrypt or decrypt.

Include subdirectories - checkbox will say include subdirectories when looking for files to encrypt or decrypt.

File Filter - entry will say what files to encrypt or decrypt.

Save – saves the entry and then appends it to the list.

Modify Selected Folder / Delete Selected Folder - when you highlight an existing folder you can modify the entry or delete it.



Encrypt/Decrypt - by selecting this choice the menu will expand to run the encryption or decryption thread on this folder only.

NOTE:

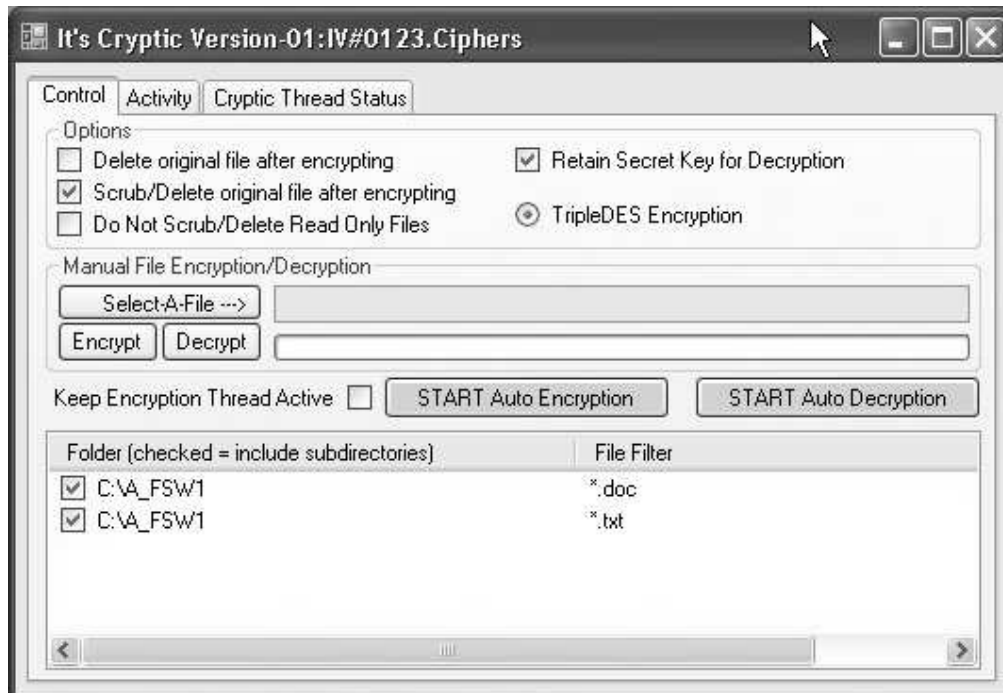
The checkbox next to the folder name indicates subdirectories for that will also be examined.

3. RUNNING IT'S CRYPTIC



This is first screen display when **It's Cryptic** is run. From here you enter the secret key you will use to encrypt all your data. This secret key is not saved for added protection.

3.1. MANUAL MODE



It's Cryptic

Manual Mode is for encrypting or decrypting a single file and possibly using a different Secret Key. A progress bar is provided to indicate the thread's progress with the selected file.

Select-A-File – pushing this button let's you select a single file to encrypt or decrypt. The file select will be displayed next to the button. Only files with a '+' at the end can be decrypted.

Encrypt – button to start encrypting the selected file, but first you will be asked if you want to change the secret key for encryption. You will also be asked if you want to change the default secret key for encryption to this new secret key.

Decrypt – button to start decrypting the selected file, but first you will be asked for the secret key to decrypt. This is done incase you leave your computer unattended. Nobody will be able to decrypt a file without knowing the secret key.

3.2. AUTOMATIC MODE

Automatic Mode is for searching the predefined folders and file filters for files to encrypt or decrypt.

START Auto Encryption – pushing this button will start **It's Cryptic** encryption threads to look into all the folders in the folder list to be examined. You will be asked to verify the default secret key for encryption, if validated, the button text will change to 'STOP Auto Encryption'. When all files have been encrypted the threads will all terminate and the button returns to its normal status. The encryption default secret key is used to encrypt files.

Keep Encryption Thread Active – when the 'START Auto Encryption' button is pushed the Encryption Thread will stay running, and watch for new files to encrypt. When the 'STOP Auto Encryption' button is pushed the thread will terminate, when it is idle.



It's Cryptic

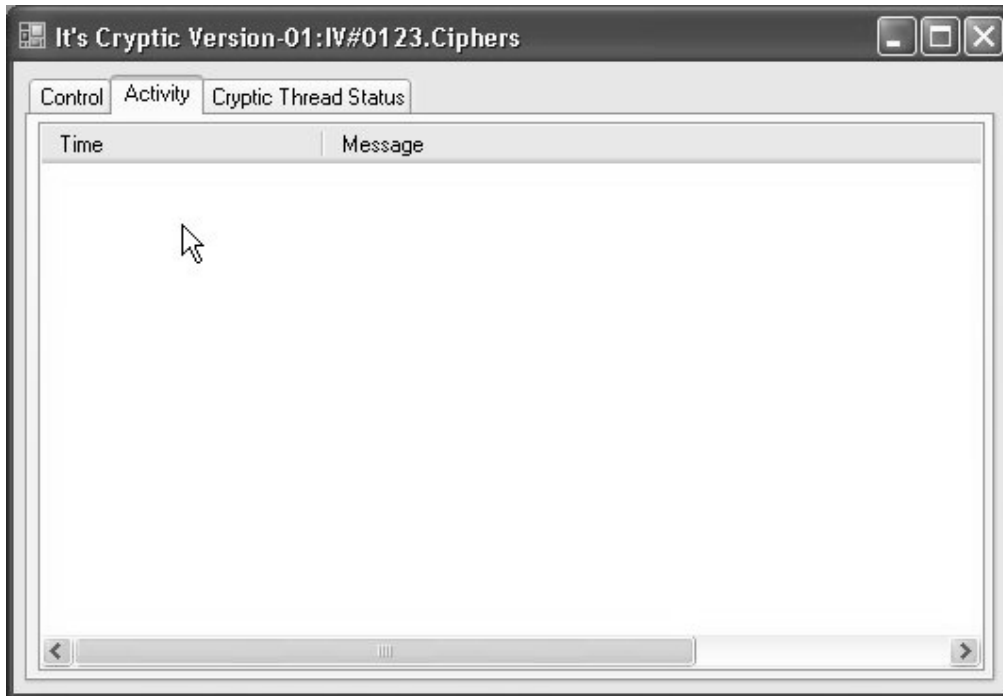
START Auto Decryption – pushing this button will start **It's Cryptic** decryption threads to look into all the folders in the folder list to be examined. The button text will change to 'STOP Auto Decryption'. When all files have been decrypted the threads will all terminate and the button returns to its normal status.

NOTE:

Manual Mode can be used anytime.

4. IT'S CRYPTIC SCREENS

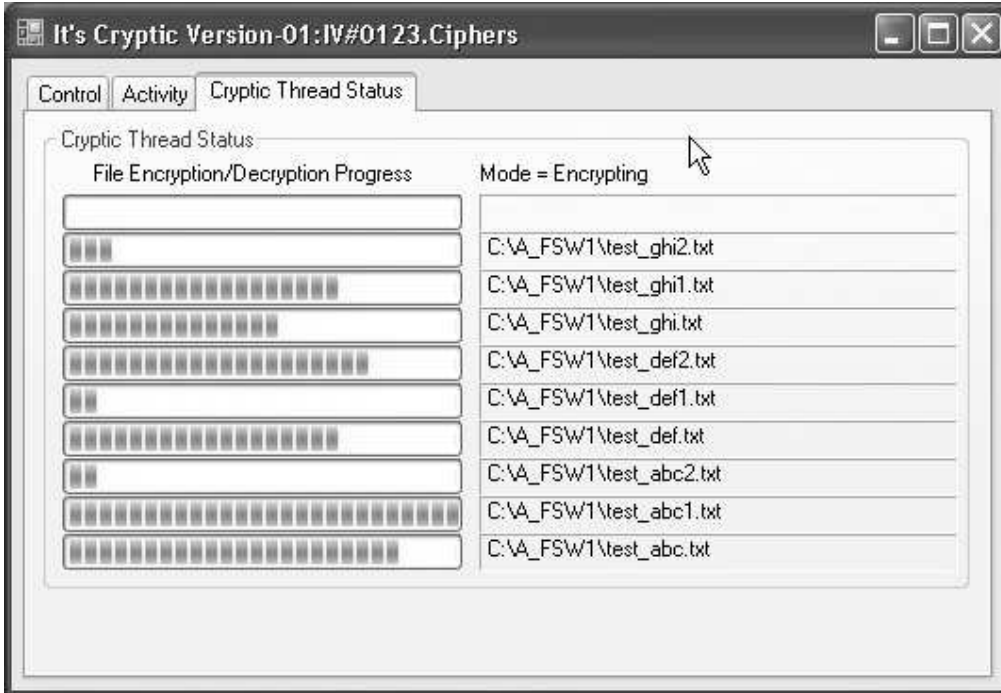
4.1. MESSAGE SCREEN



This screen will display messages from the It's Cryptic program and its threads. All files being encrypted or decrypted will be displayed here. Also, any errors encountered will also be displayed. This message list is not saved anywhere.



4.2. CRYPTIC THREAD STATUS SCREEN



When in the Automatic Mode, **It's Cryptic** uses threads to do its work. The status of these threads can be viewed here. When encrypting or decrypting the progress bar moves to the right. When scrubbing an original file after encrypting the progress bar moves to the left, indicating how much more to scrub.

5. IT'S CRYPTIC AND IT'S CRYPTIC QUICK DECRYPT COMMAND-LINE EXECUTION

It's Cryptic and **It's Cryptic Quick Decrypt** can be executed by passing the file (must include the entire path) to decrypt. Also using Windows Explorer you can do a right-click and use the 'open with' to automatically use **It's Cryptic** or **It's Cryptic Quick Decrypt** to decrypt a file for you. You still must know the secret key to decrypt.

